

END CAP REC

Protective cap to finish open channel ends

REC end cap seals off open channel terminations. Helps ensure safety and improve aesthetics by covering sharp edges.



Application

- Closes open ends of channel, box and threaded rod sections to provide a neat finish.

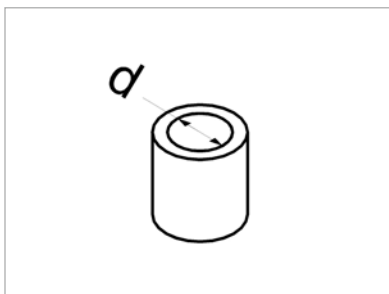


Material

- Material-Plastic

Key Features & Benefits

- Protects metal edges from dust, dirt, and moisture entry.
- Durable plastic ensures long-lasting performance.
- Snap-fit design enables quick and tool-free installation.
- Provides a professional, aesthetic appearance to exposed ends.



d	Diameter
---	----------



END CAP REC

Product Variants

Item No.	Description	Thread (mm)	Sales Unit (Pcs)
403107	End Cap REC 08	8	100
403108	End Cap REC 10	10	100
403109	End Cap REC 12	12	100

RISE DBS Private Limited

Bannerghatta Road, Bangalore,
Bangalore South, Karnataka,
India, 560076



Contact us

info@rise-dbs.com | www.rise-dbs.com